



Glens Flats

High Pitington DH6 1AR

£500 Per Calendar Month





This footer paragraph is an example only and should not be relied upon as complying with current legislation. These particulars, whilst believed to be accurate are set out as a general outline only for guidance and do not constitute any part of an offer or contract. Intending purchasers should not rely on them as statements of representation of fact, but must satisfy themselves by inspection or otherwise as to their accuracy. No person in this firms employment has the authority to make or give any representation or warranty in respect of the property.



This footer paragraph is an example only and should not be relied upon as complying with current legislation. These particulars, whilst believed to be accurate are set out as a general outline only for guidance and do not constitute any part of an offer or contract. Intending purchasers should not rely on them as statements of representation of fact, but must satisfy themselves by inspection or otherwise as to their accuracy. No person in this firms employment has the authority to make or give any representation or warranty in respect of the property.

Glens Flats

High Pittington DH6 1AR



- Available end of January 2026
- EPC RATING - C
- Spacious living room

- Spacious first floor flat
- Two bedrooms
- Useful utility room

- Rarely available village
- Large kitchen with space to dine
- Parking to the rear

Available end of January on an unfurnished basis, early viewing is essential of this spacious first floor flat with two bedrooms in the sought after village of High Pittington.

Well presented throughout, the floor plan comprises of an entrance hall, landing, spacious living room, large kitchen with space to dine, useful utility room, two well proportioned bedrooms and bathroom/WC. Externally there is parking to the rear.

High Pittington enjoys a selection of local amenities including a highly regarded primary school and has good road access to Durham and to the A690 giving access to routes across the region.

GROUND FLOOR

Entrance Hall

Entered via UPVC door. With stairs leading to the first floor.

FIRST FLOOR

Landing

With radiator and access to the loft.

Living Room

13'10" x 11'6" (4.22 x 3.51)

Spacious reception room with a UPVC double glazed window to the front and radiator.

Kitchen/Diner

14'2" x 11'0" (4.33 x 3.36)

Large kitchen with space to dine. Fitted with a range of units having contrasting worktops incorporating a stainless steel and drainer unit, a cooker with extractor over, radiator and UPVC double glazed window to the rear.

Bedroom One

10'2" x 8'11" (3.12 x 2.73)

Double bedroom with a UPVC double glazed window to the front, storage cupboard and radiator.

Bedroom Two

10'0" x 7'11" (3.06 x 2.42)

Further well proportioned bedroom with a UPVC double glazed window to the rear and radiator.

Utility Room

8'5" x 8'4" (2.59 x 2.56)

A useful room with fitted base units, a stainless steel sink and drainer unit, plumbing for a washing machine, fridge/freezer and UPVC double glazed window to the side. A door leads to stairs providing access to the rear parking.

Bathroom/WC

12'1" x 5'0" (3.69 x 1.53)

Comprising of a panelled bath with electric shower over, pedestal wash basin and WC. Having tiled splashbacks, radiator and UPVC double glazed opaque window to the rear.

EXTERNAL

There is parking available to the rear of the property.

Tenant Information

All of our rental properties require a Holding Deposit equivalent to 1 week's rent. The Tenant is entitled for this Holding Deposit to be repaid within 15 calendar days of their application proceeding. However, in most cases we hope to repay this to the Tenant on the day you move in and this will be deducted from your first month's rent. This will need to be agreed with the Tenant during the application process.

You will lose your Holding Deposit if any of the following occurs:

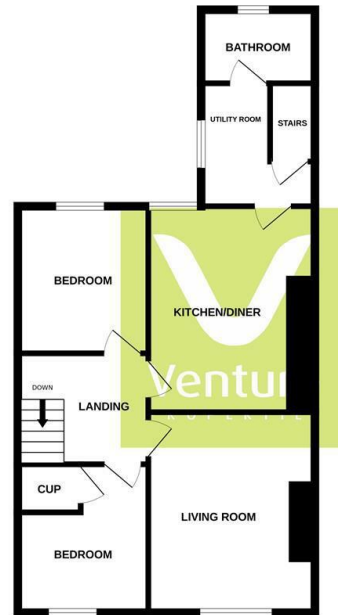
1. You give us false or misleading information. For example, incorrect salary/income details or you fail to tell us about a CCJ.
2. You fail a Right to Rent check and are not eligible to reside in the UK.
3. You withdraw your application.
4. You drag your feet during the application process.

All of our rental properties will require a Security Deposit, payable on the day you move in, equivalent to one months rent.

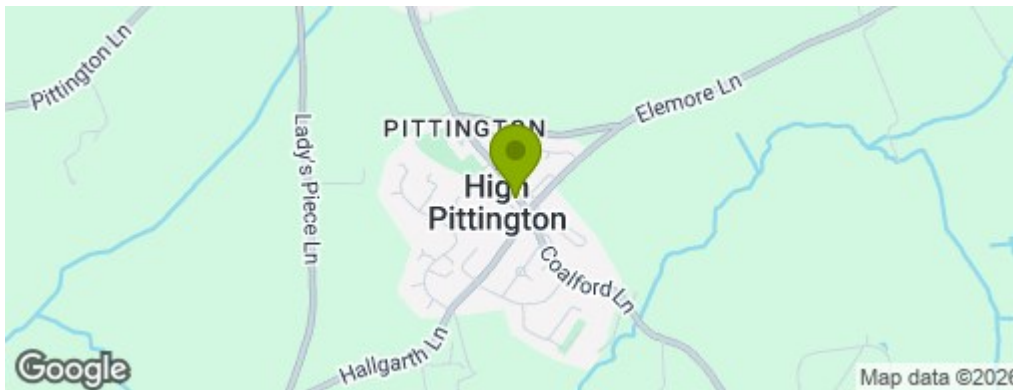
Bond / Deposit

The security deposit (bond) amount is equivalent to 4 weeks rent.

FIRST FLOOR FLAT



Whilst every attempt has been made to ensure the accuracy of the floorplan contained here, measurements of doors, windows, rooms and any other items are approximate and no responsibility is taken for any error, omission or misstatement. This plan is for illustrative purposes only and should be used as such for any prospective purchase. The architect, system and appearance of items used are deemed correct and no guarantee as to their operability or efficiency can be given.
Made with Mapplan 12/23



Property Information

0191 372 9797

1 Whitfield House, Durham, DH7 8XL
durham@venturepropertiesuk.com